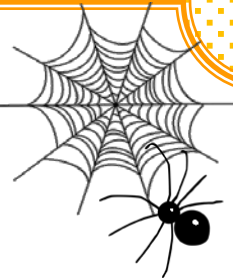




In the dark ...

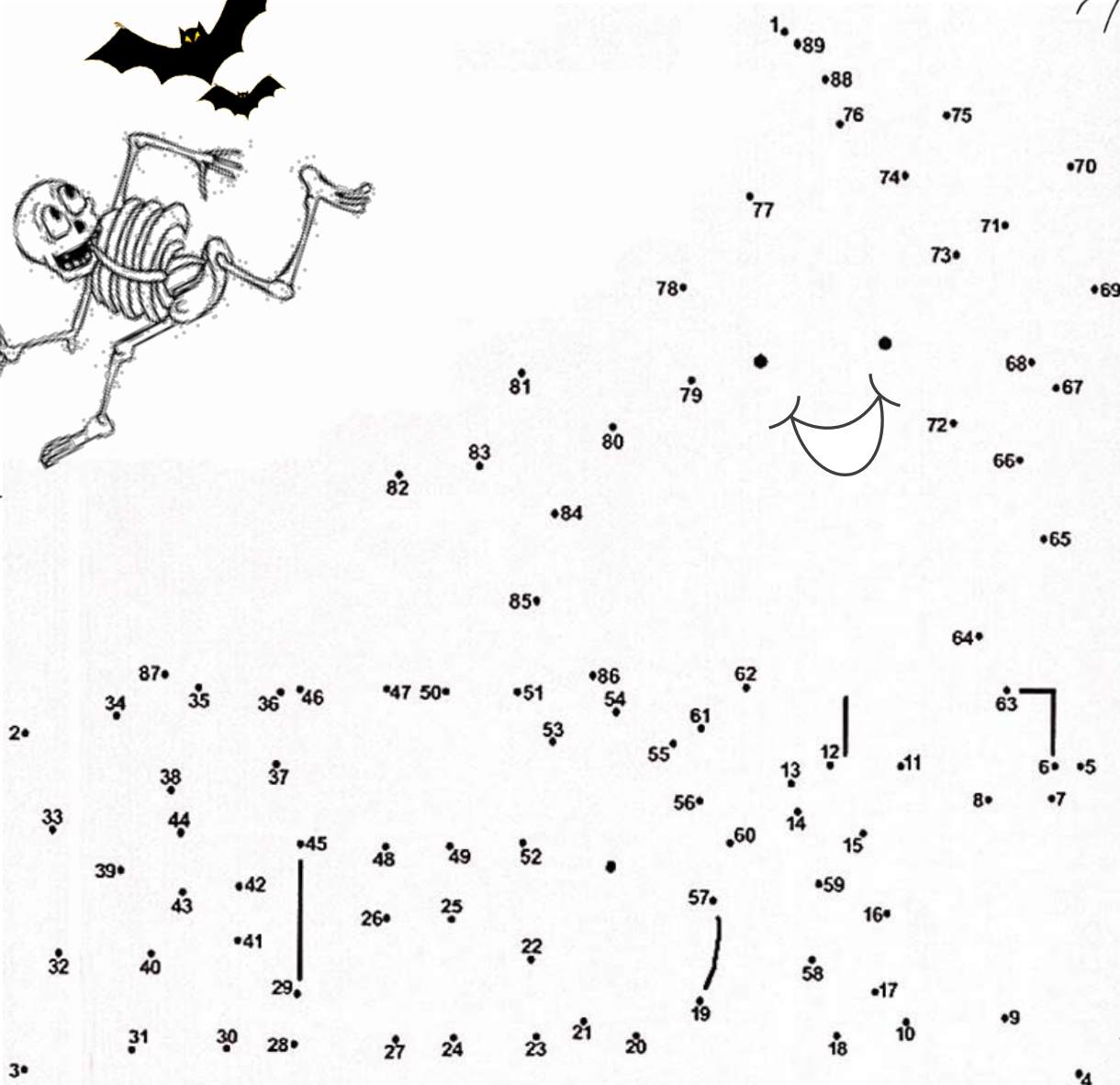
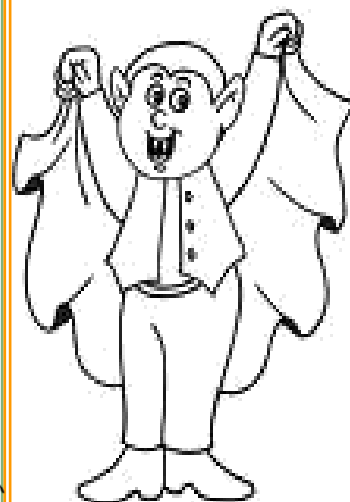


Who is in the dark box?

Connect the dots from one to eighty – nine and see how this traditional rhyme ends.



In a dark, dark house
there's a dark, dark room.
In the dark, dark room
there's a dark, dark cupboard.
In the dark, dark cupboard
there's a dark, dark shelf.
On the dark, dark shelf
there's a dark, dark box.
And in the dark, dark box
there's a dark, dark...



Boo!

I'm a ghost!

